

HO  
ME

**01.**  
CONTESTO

*contesto* .03

**02.**  
PROGETTO

*planimetria generale* .05

*viste esterne* .07

*pianta piano terra* .08

*assonometria* .12

*prospetti* .15

*sezioni* .26

*viste interne* .27

**03.**  
ILLUMINAZIONE

*illuminazione piano terra* .51

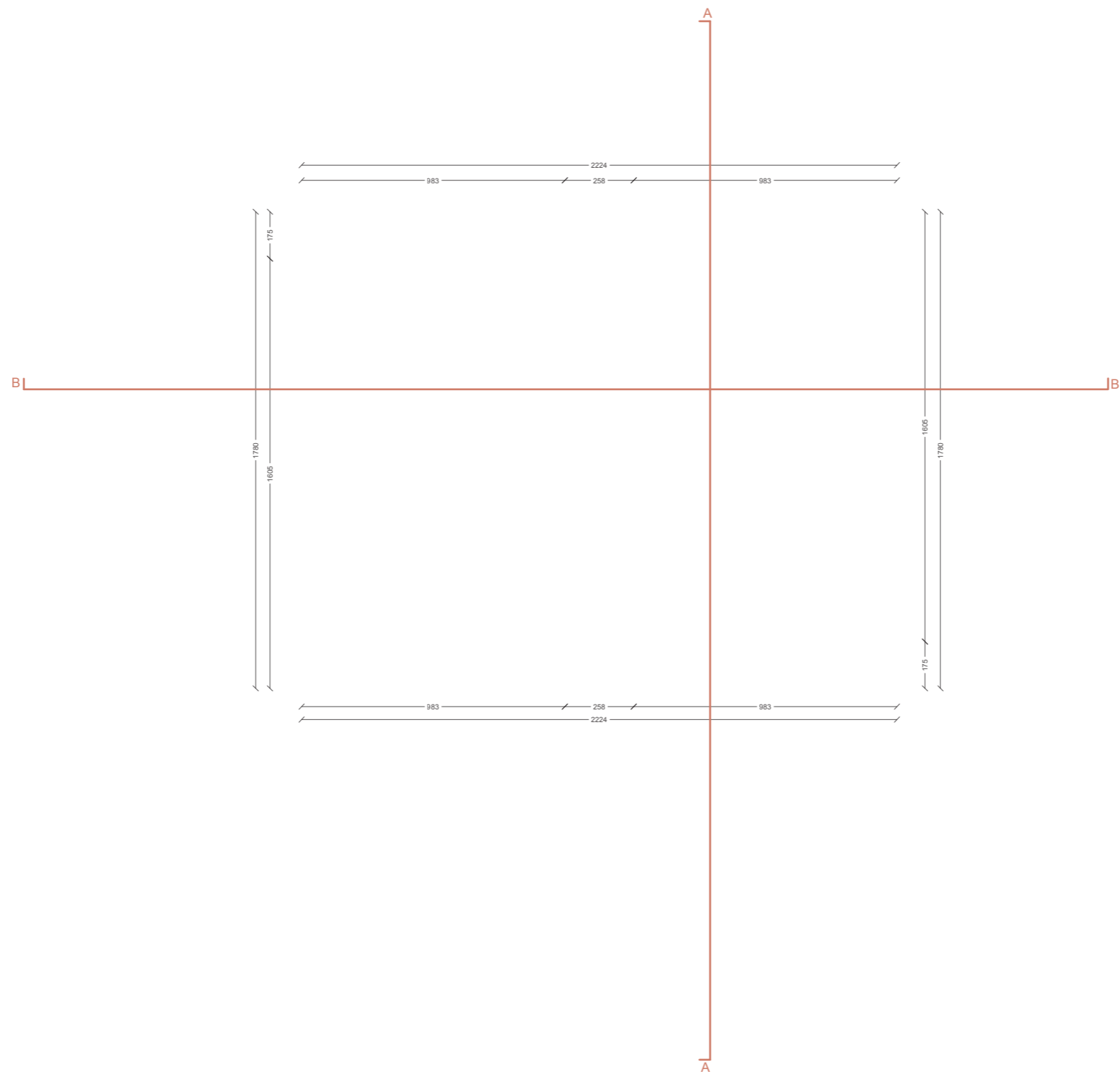
*legenda* .52

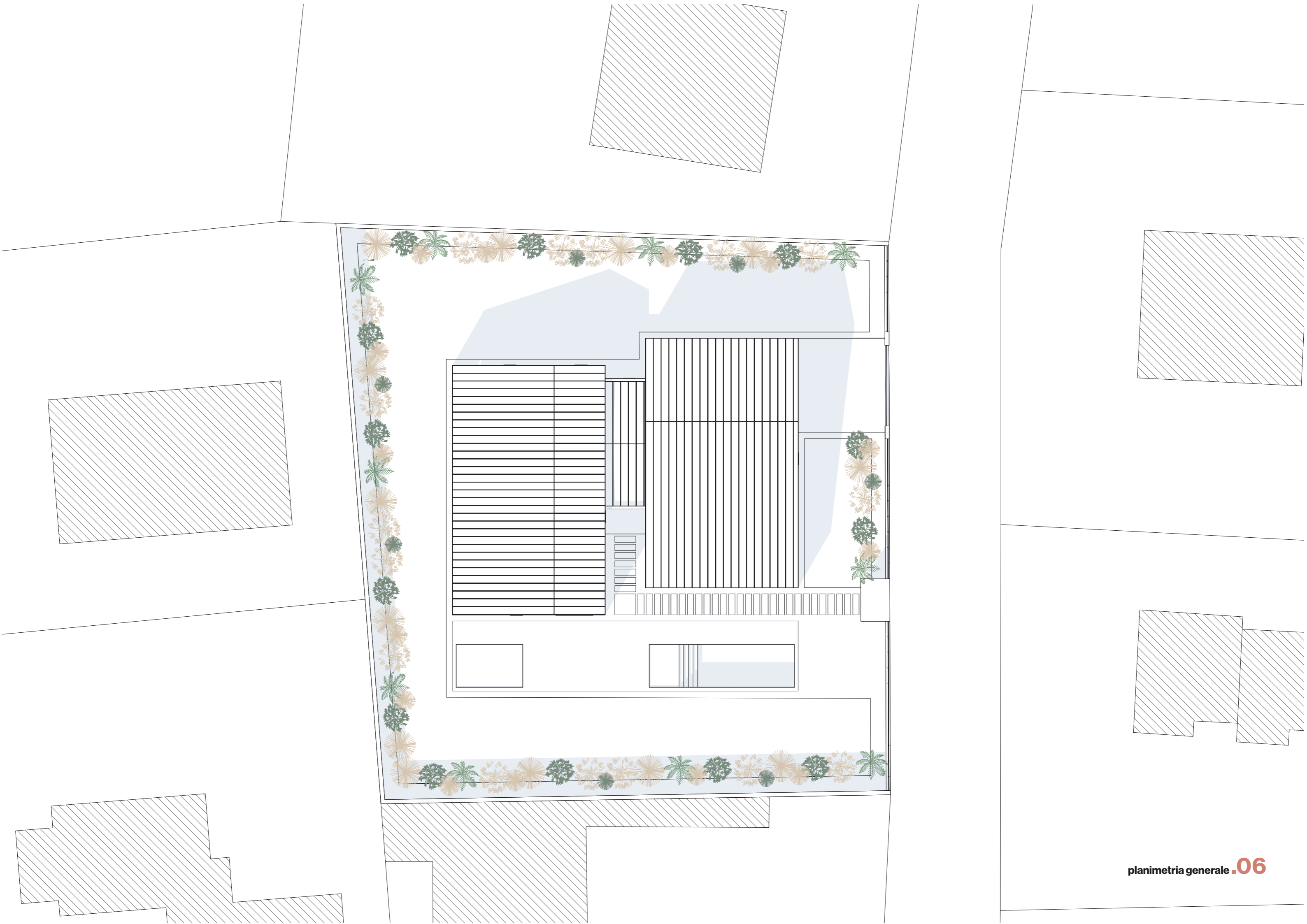






**PROGETTO**

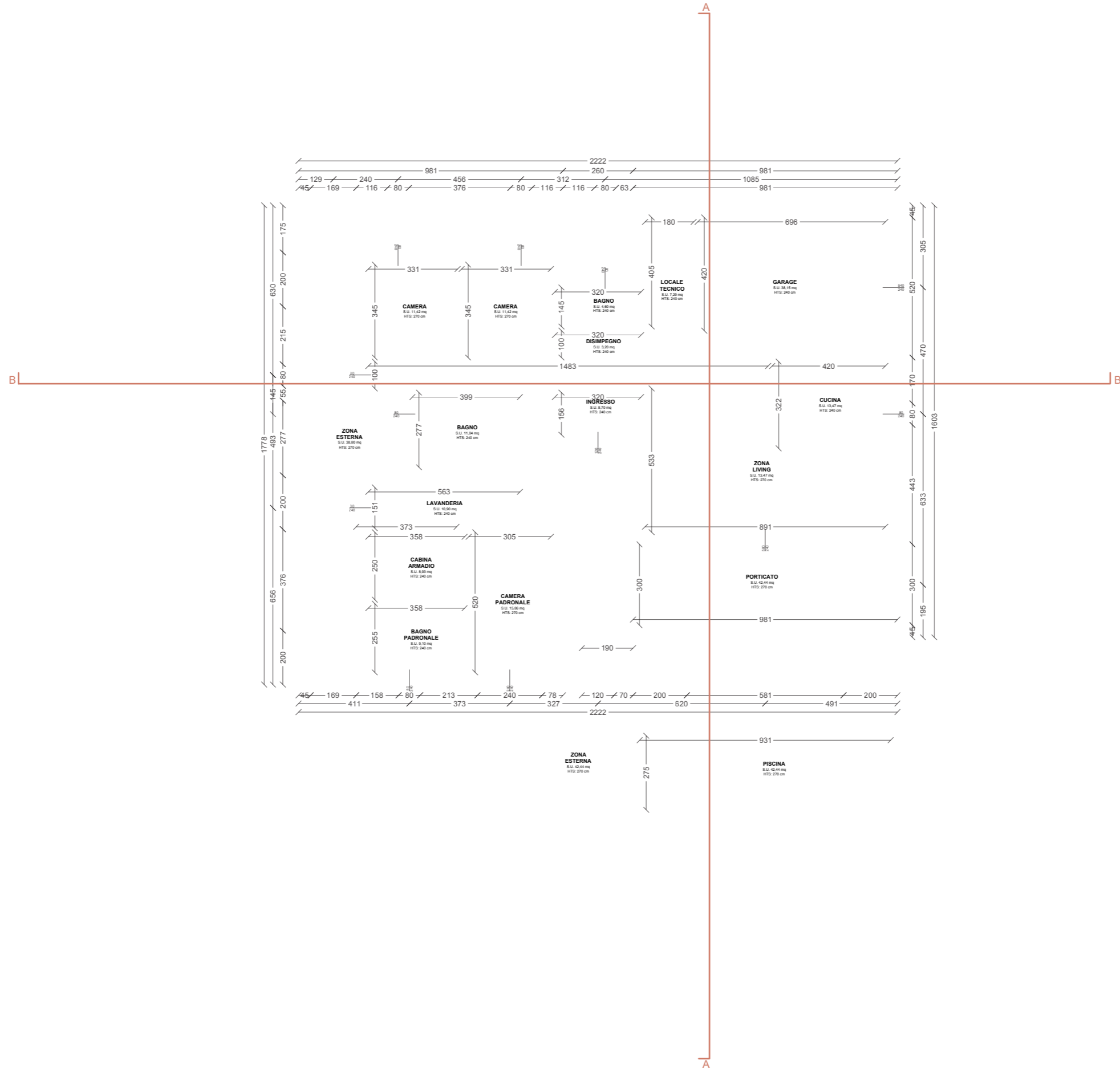














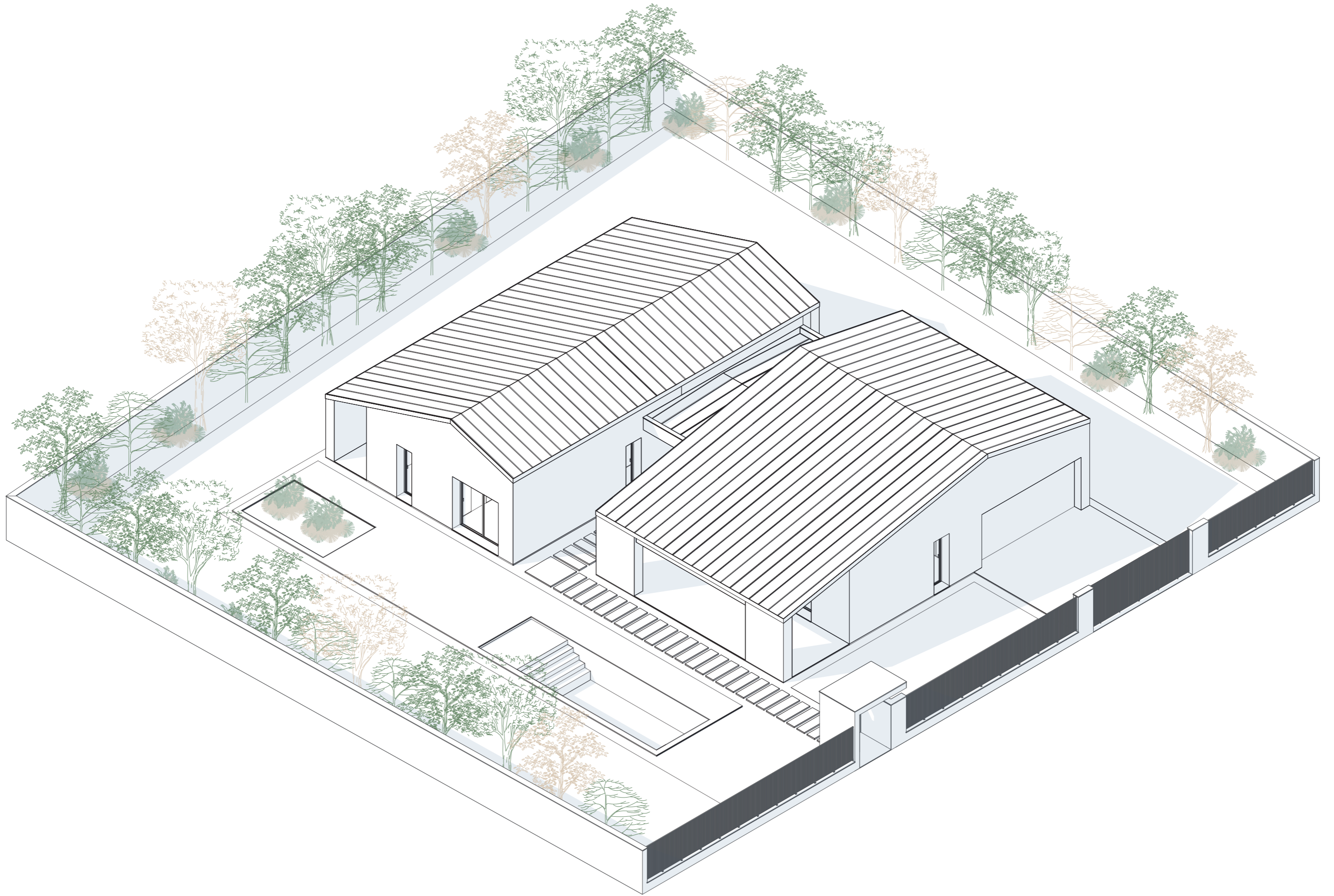










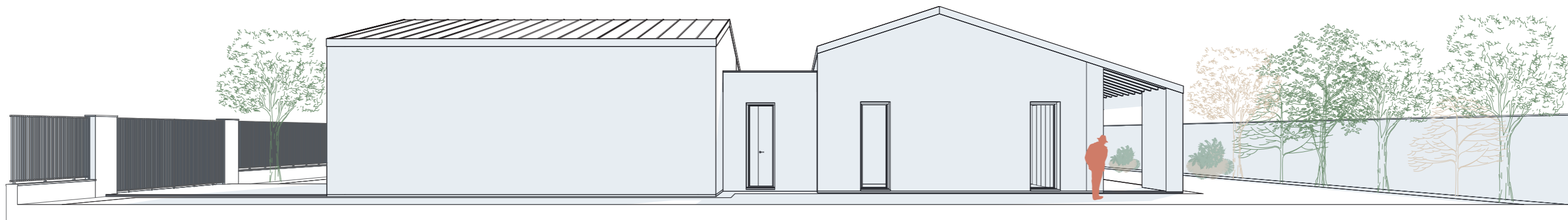




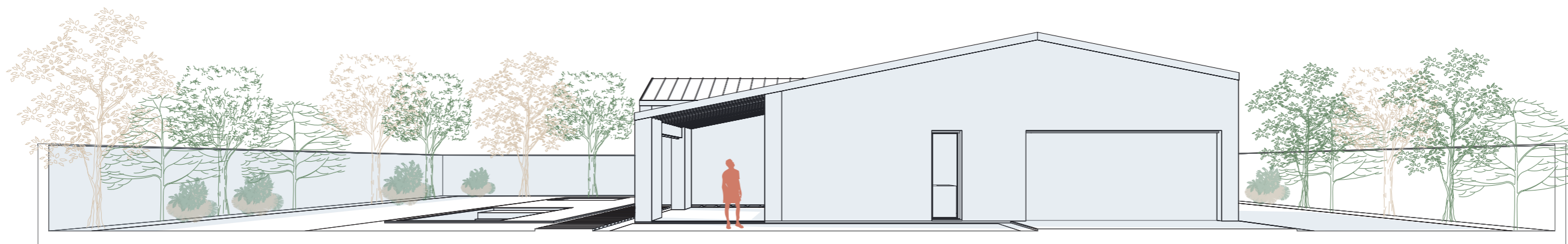








prospetto nord



prospetto est







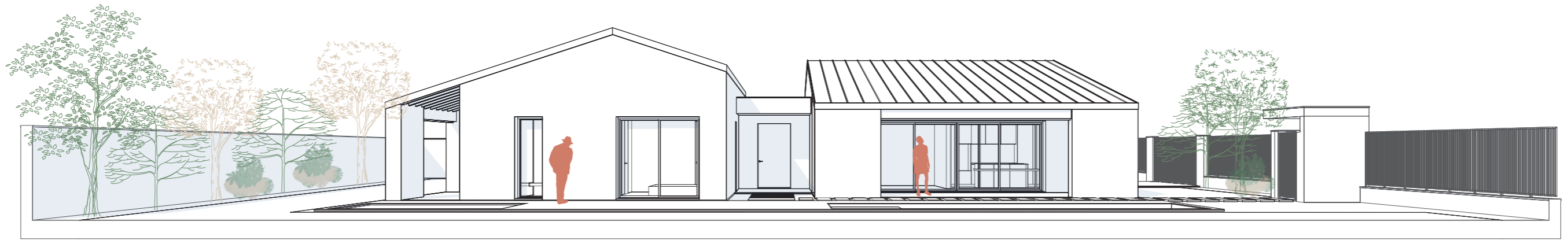




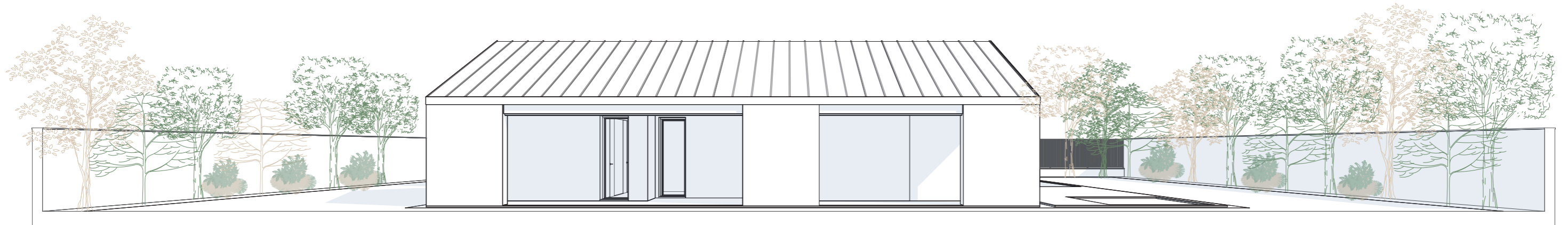








prospetto sud



prospetto ovest











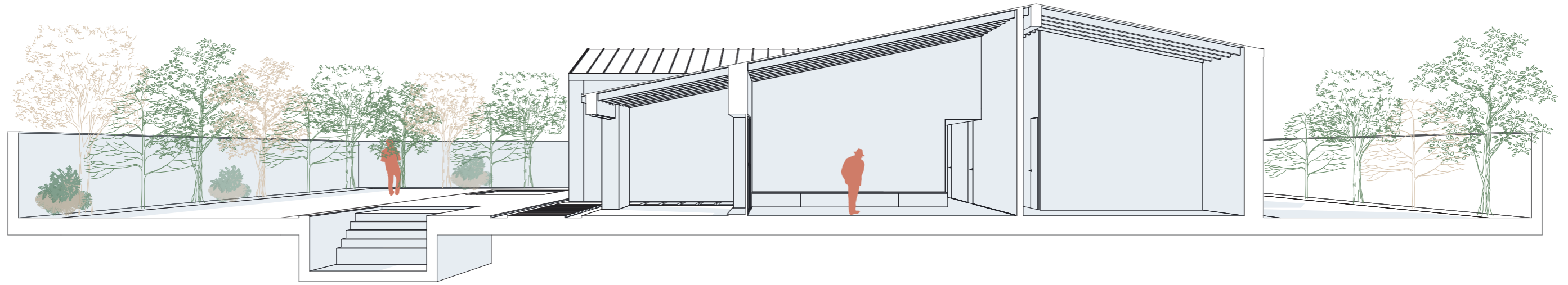




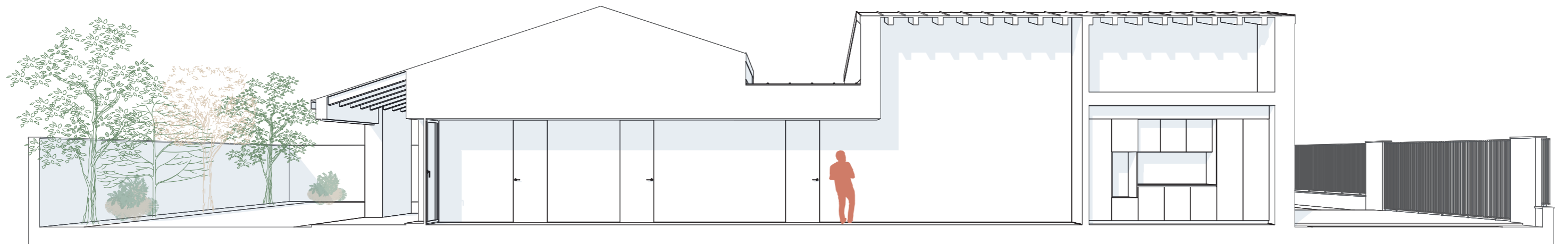








sezione AA



sezione BB





























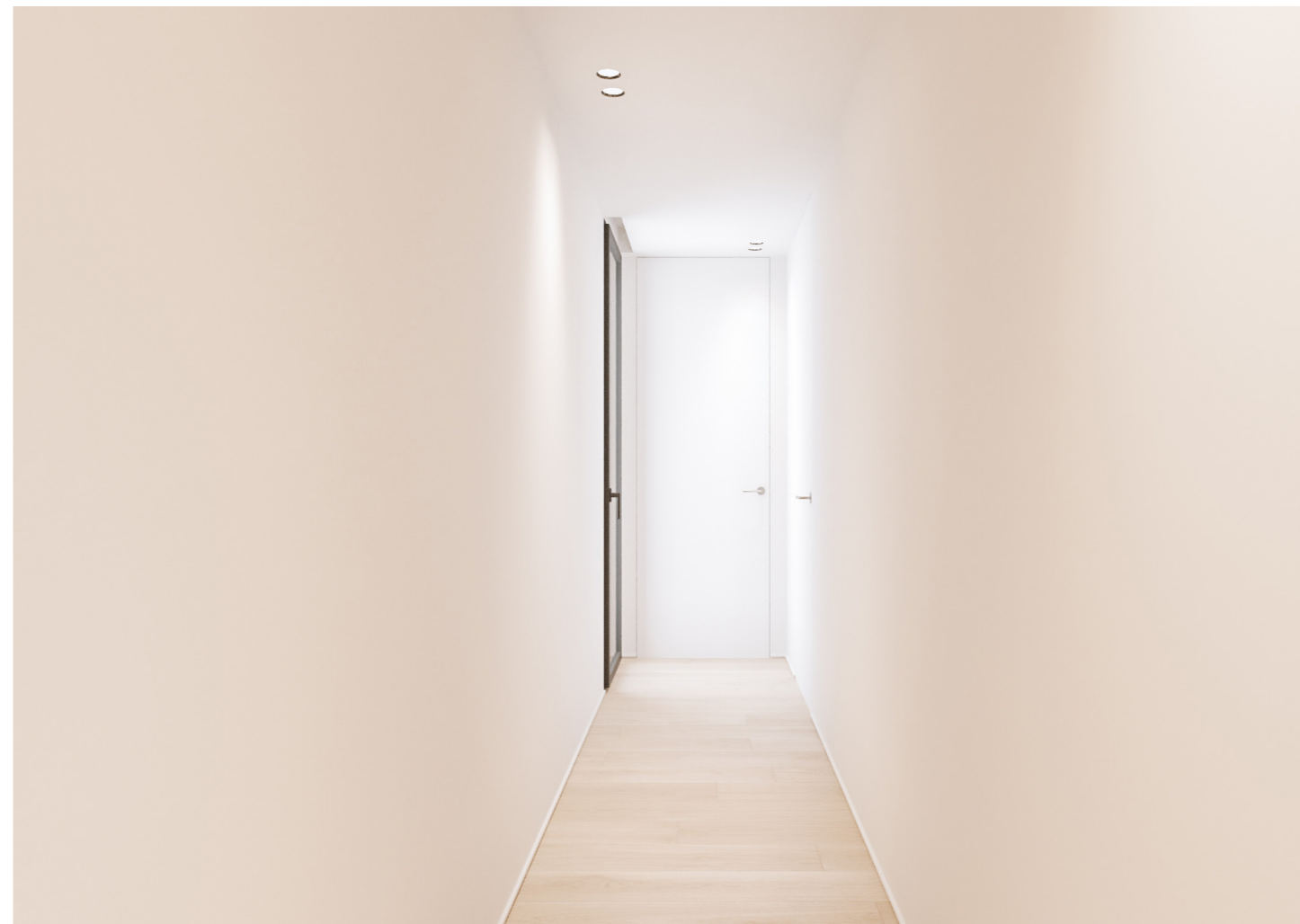


































































**ILLUMINAZIONE**









**E1.**

**SIMES\_Suit**



**E2.**

**SIMES\_Micro look paletto**  
h.450 mm



**E3.**

**Binario esterno led**



**E4.**

**SIMES\_Ministage soffitto**



**E5.**

**SIMES\_Flower 25 paletto**





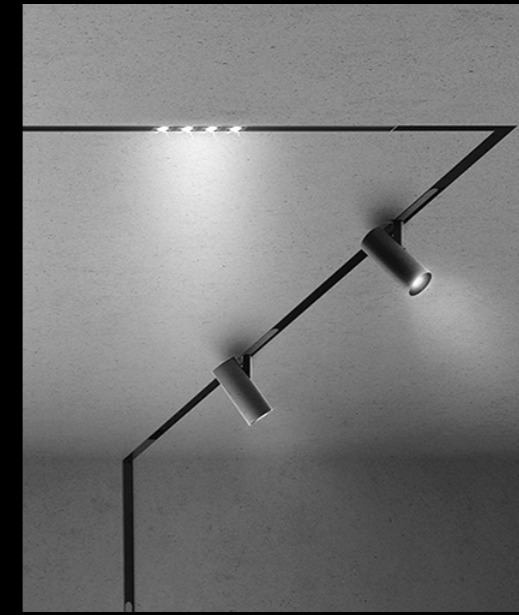
1. Faretto a incasso



2. Binario led ad incasso



3. Wall Washer



4. Barra componibile led e faretti



5. Dvide Groppi \_ MOON



6. Binario led testata letto



7. Linea light \_ INK system



8. Dvide Groppi \_ SAMPEI



9. Sospensione cerchio led



**SITO**  
*Cesate (MI)*

**PROGETTO**  
*Architettura e Interior design*

**PROGETTISTA**  
*ZDA | Zupelli Design Architettura*

**ARCHITETTO**  
*Arch. Carlo Zupelli*

**COLLABORATORI**  
*Marco Bettera, Francesca Salvoni, Matteo Sturla,  
Ottavia Zuccotti, Ezio Zupelli*

**ANNO**  
*2023*



Via Cavour, 28  
25034 Orzinuovi (BS)  
Italy



+39 030 5243585  
[info@zupellidesignarchitettura.com](mailto:info@zupellidesignarchitettura.com)  
[www.zupellidesignarchitettura.com](http://www.zupellidesignarchitettura.com)